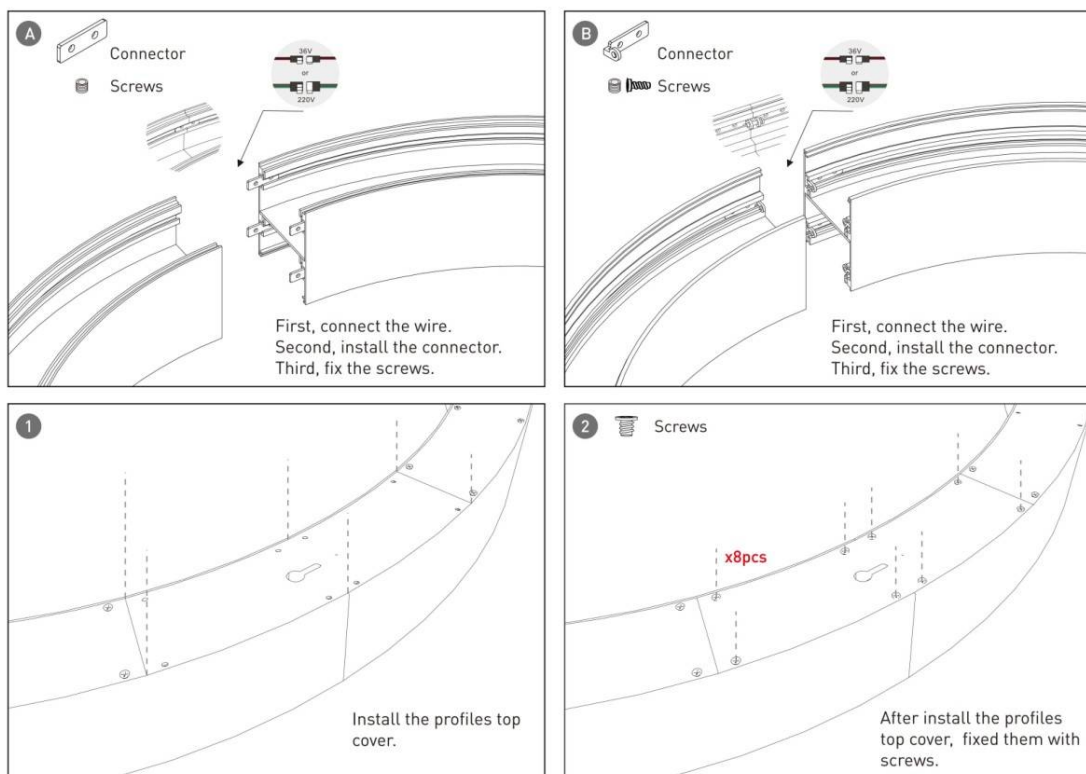
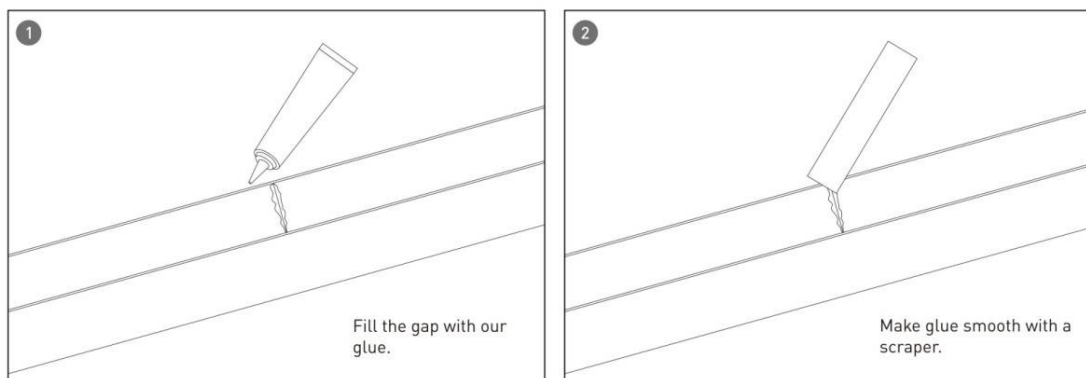




Installation-Profile connection



Installation-Cover



Installation-End cap



Installation-Screws ceiling

1

x Npcs

First, make marks on the ceiling, then dig holes.

2

The lamp top cover.

3a

If the driver is **dimming & external** installation

Connect the wires correctly as above showing.

3b

If the driver is **non-dimming & external** installation

Connect the wires correctly as above showing.

4

Install the lamp with screws.

5

Install the cover.

6

Finished.

Installation-Pendant with ceiling box

1


First, make marks on the ceiling, then dig holes.

2


Second, fixed the terminals of the pendant suit and box holder with screws

3


Install the terminals of the pendant suit.

4


Install the lamp as the picture shows.

5a

If the driver is **dimming & external** installation



Connect the wires correctly as above showing.

5b

If the driver is **non-dimming & external** installation



Connect the wires correctly as above showing.

6

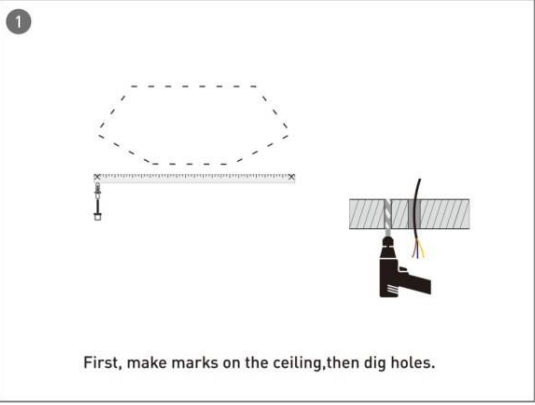

Install the big box as above showing.

7


Finished


Installation-C Clip ceiling

1



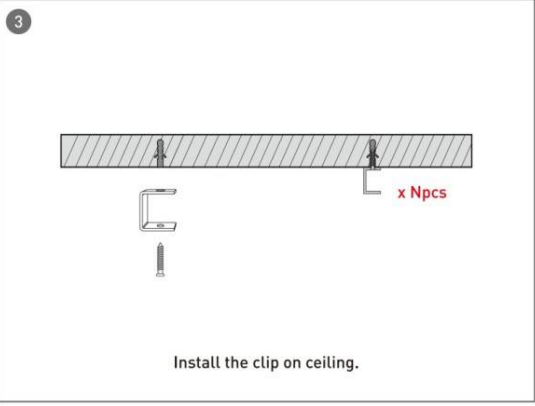
First, make marks on the ceiling, then dig holes.

2



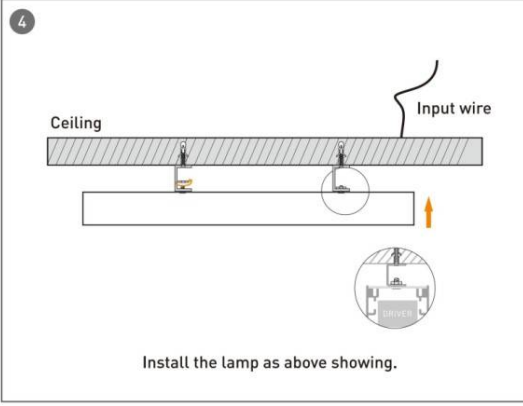
The lamp top cover.

3



Install the clip on ceiling.

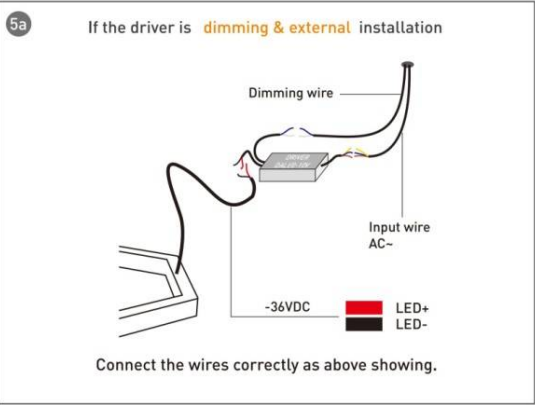
4



Install the lamp as above showing.

5a

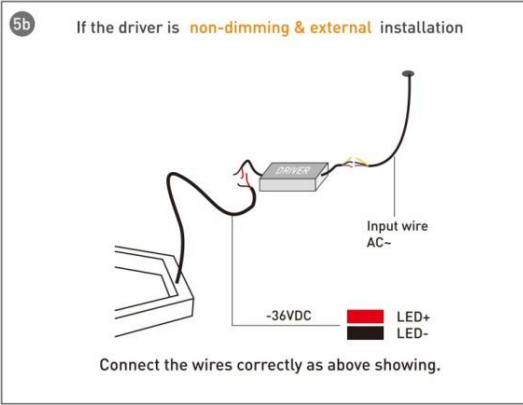
If the driver is **dimming & external** installation



Connect the wires correctly as above showing.

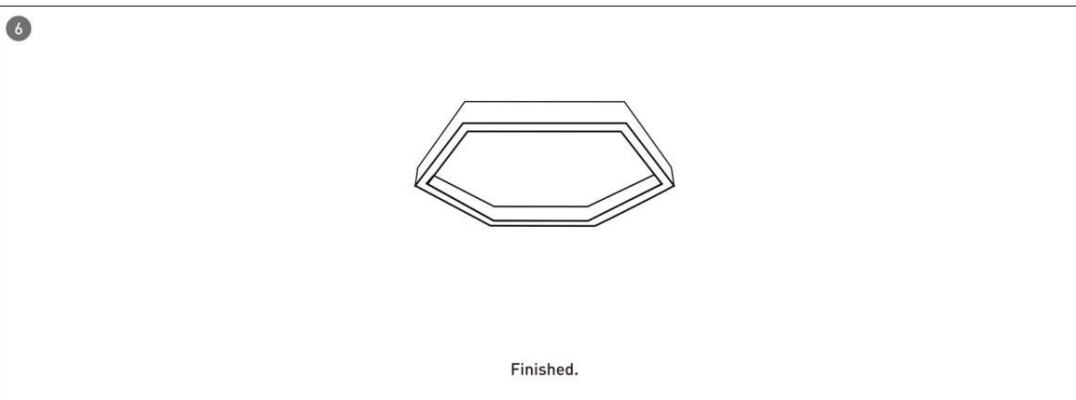
5b

If the driver is **non-dimming & external** installation



Connect the wires correctly as above showing.

6



Finished.